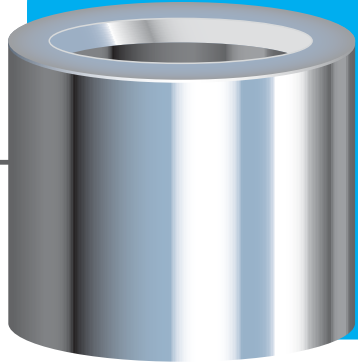
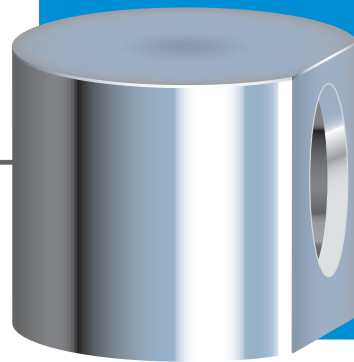


Hydraulock SAE Ports

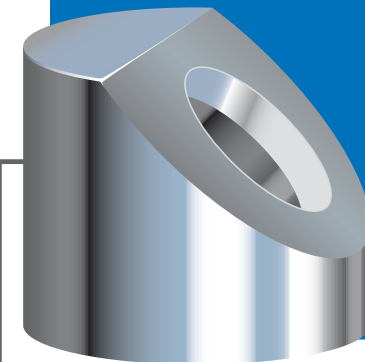
Call us for NPT Ports



Straight
SAE Port








90°
SAE Port



45°
SAE Port

Description	Port Size	Box Qty	O-Ring	OD	OAH
#4 O-Ring Port	7/16 - 20	1000	4	3/4"	0.640
#6 O-Ring Port	9/16 - 18	500	6	1"	0.730
#8 O-Ring Port	3/4 - 16	400	8	1-1/8"	0.810
#10 O-Ring Port	7/8 - 14	250	10	1-5/16"	0.925
#12 O-Ring Port	1-1/16 - 12	150	12	1-5/8"	1.020
#16 O-Ring Port	1-5/16 - 12	150	16	1-3/4"	1.020
#4 O-Ring Port 90°	7/16 - 20	230	4	1-18"	1.120
#6 O-Ring Port 90°	9/16 - 18	170	6	1-1/4"	1.250
#8 O-Ring Port 90°	3/4 - 16	70	8	1-5/8"	1.625
#6 O-Ring Port 45°	9/16 - 18	180	6	1-1/8"	1.125

-  \$15 Broken Box Fee
-  Add a machined radius: just \$1.95/ea
-  We ship direct from stock
-  Call us for pricing on NPTs
-  See our Lock Nut Pricing

