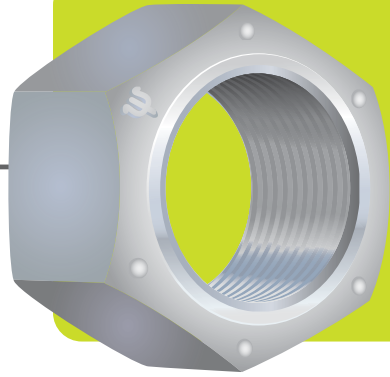
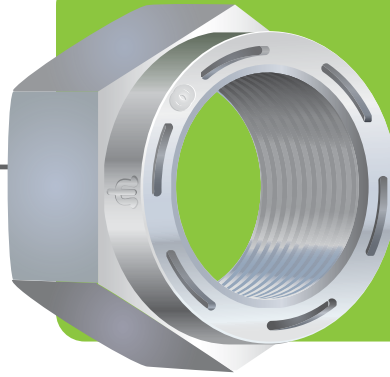


Hydraulock Locknuts from TriState Tool & Die



**Auto
Locknut**



**Collar
Locknut**

- Tapped after heat treating
- Through-hardened
- Flat bearing face
- Consistent torque
- Precision machine collar (collared nuts)

Hardness: HRC 26 - 36
Proof Strength: 150,000 PSI
Plating: Cadmium and Wax
 or
 Phos. and Oil

	Width Across Flats		Width Across Corners		Overall Thickness		Hex Height		Prevailing Torque Max. in FtLb (1st Installation)		Breakaway Torque Min. 1st Min. 3rd		Proof Load (in Lbs)	
	Max.	Min.	Max.	Min.	Max.	Min.	Max.	Min.	Max.	Production Torque	Removal (in Lbs)	Removal (in Lbs)	Fine	Course
5/8" - 18 auto	0.929	0.919	1.083	1.051	0.545	0.535	0.460	0.455	35		25	15	38,400	
3/4" - 16 auto	1.095	1.085	1.299	1.240	0.627	0.617	0.545	0.525	45		35	25	65,000	
7/8" - 14 auto	1.312	1.269	1.516	1.447	0.766	0.724	0.510	0.490	70	25 - 30	88	30	76,000	69,300
1" - 14 auto	1.500	1.450	1.732	1.653	0.867	0.831	0.580	0.560	90	30 - 35	120	40	101,900	90,900
1" - 14 collar	1.689	1.631	1.949	1.859	0.999	0.939	0.650	0.630	100	40 - 45	150	50	128,000	115,000
1-1/8" - 12 collar	1.877	1.812	2.165	2.066	1.094	1.030	0.720	0.700	110	45 - 50	188	60	161,000	145,000
1-1/4" - 12 collar	2.062	1.914	2.382	2.273	1.206	1.138	0.790	0.770	135	50 - 55	220	70	197,000	173,000
1-3/8" - 12 collar	2.252	2.175	2.598	2.480	1.317	1.245	0.860	0.840	150	55 - 60	260	90	237,000	211,000
1-1/2" - 12 collar	2.437	2.356	2.814	2.686	1.459	1.382	0.962	0.942	160	65 - 70	300	100	281,000	241,000
1-3/4" - 12 collar	2.645	2.538	3.031	2.893	1.540	1.460	1.035	1.015	170	70 - 80	340	113	336,000	285,000
2" - 12 collar	3.020	2.890	3.464	3.306	1.763	1.675	1.180	1.160	185	95 - 110	380	127	434,000	375,000
2-1/4" - 12 collar	3.377	3.263	3.899	3.720	1.985	1.890	1.325	1.305	195	115 - 120	420	140	554,000	487,500
2-1/2" - 12 collar	3.752	3.625	4.332	4.133	2.208	2.105	1.470	1.450	205	125 - 130	460	153	612,000	600,000
2-3/4" - 12 collar	4.125	3.087	4.763	4.545	2.431	2.319	1.611	1.591	215	130 - 135	500	167	845,000	739,000
3" - 12 collar	4.500	4.350	5.196	4.959	2.654	2.534	1.760	1.740	225	140 - 150	540	180	1,003,000	895,500