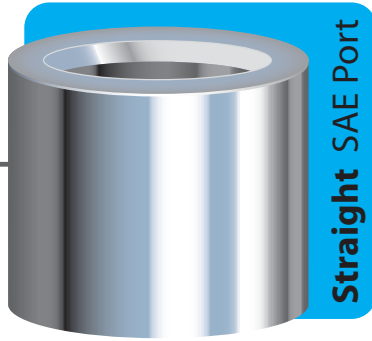
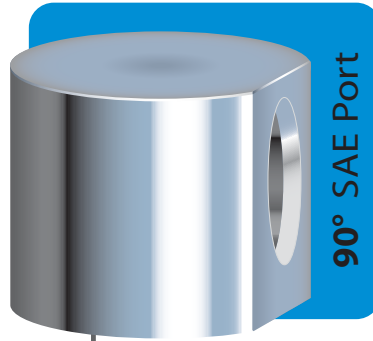


Hydraulock Ports & Locknuts

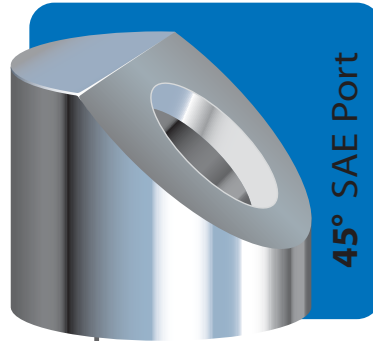
Call us for NPT Ports



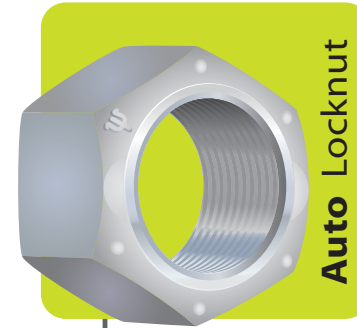
Straight SAE Port



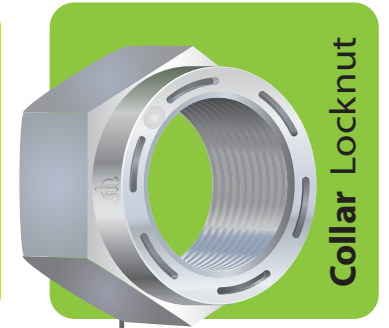
90° SAE Port



45° SAE Port



Auto Locknut



Collar Locknut

Description	Port Size	Full Box Price (US\$)	Box Qty	O-Ring	OD	OAH
#4 O-Ring Port	7/16 - 20	1.00/ea	1000	4	3/4"	0.640
#6 O-Ring Port	9/16 - 18	1.25/ea	500	6	1"	0.730
#8 O-Ring Port	3/4 - 16	1.35/ea	400	8	1-1/8"	0.810
#10 O-Ring Port	7/8 - 14	1.80/ea	250	10	1-5/16"	0.925
#12 O-Ring Port	1-1/16 - 12	2.95/ea	150	12	1-5/8"	1.020
#16 O-Ring Port	1-5/16 - 12	3.35/ea	150	16	1-3/4"	1.020
#4 O-Ring Port 90°	7/16 - 20	2.15/ea	230	4	1-18"	1.120
#6 O-Ring Port 90°	9/16 - 18	2.30/ea	170	6	1-1/4"	1.250
#8 O-Ring Port 90°	3/4 - 16	5.60/ea	70	8	1-5/8"	1.625
#6 O-Ring Port 45°	9/16 - 18	2.55/ea	180	6	1-1/8"	1.125

Description	Full Box Price (US\$)	Box Qty
5/8" - 18 auto	\$0.17/ea	800
3/4" - 16 auto	\$0.30/ea	500
7/8" - 14 auto	\$0.47/ea	300
1" - 14 auto	\$0.64/ea	200
1" - 14 collar	\$1.05/ea	00
1-1/8" - 12 collar	\$1.60/ea	130
1-1/4" - 12 collar	\$1.85/ea	100
1-3/8" - 12 collar	\$2.85/ea	70
1-1/2" - 12 collar	\$3.45/ea	50
1-3/4" - 12 collar	\$7.45/ea	35
2" - 12 collar	\$8.75/ea	20
2-1/4" - 12 collar	\$22.50/ea	15
2-1/2" - 12 collar	\$24.50/ea	12
2-3/4" - 12 collar	\$73.00/ea	6
3" - 12 collar	\$85.00/ea	6

\$15 Broken Box Fee

Add a machined radius: just \$1.95/ea

We ship direct from stock

800.410.4558

www.Hydraulock.com

1396 Norton Rd. Stow, Ohio 44224

Hydraulock, a division of TriState